

Annual Report

abwe

January 2020 - December 2020



A GLOBAL FAMILY OF MINISTRIES



President's Letter

ABWE exists to fulfill the Great Commission by multiplying leaders, churches, and missions movements among every people.



A Time for Everything

There are no shortcuts in global missions.

We know real evangelism, discipleship, and church planting take time. For our fruit to endure, we must be prepared for long-term investment.

“For everything there is a season...a time to plant, and a time to pluck up what is planted...a time to break down, and a time to build up,” (Ecc 3:1-3).

Last year was certainly unique. Across most of the world, the pandemic halted in-person church gatherings and disciple making—face-to-face forms of ministry that are indispensable.

Yet the gospel surged forward.

Our missionaries and partners at times had to reimagine ministry. New forms of outreach were born.

But in other ways, nothing changed at all. The fundamentals of planting healthy churches, training leaders, serving the needy, and proclaiming the simple gospel still apply.

Stories are still pouring in about what God accomplished last year. Like the Israelites who erected memorial stones on their journeys, we’re marking 2020 as a year in which Christ powerfully built his church despite the best efforts of hell (Matt 16:18).

As you read about what God did in 2020, rest with us in the truth that our sovereign God has ordained a time for everything. ■

Paul Davis | ABWE President

Paul and his wife Martha have served in ministry since 1989 and at ABWE since 2017. In their lifetime of ministry, they have led church plants, Christian schools, and dynamic ministry teams. Additionally, they have given oversight to children’s, youth, and college/career ministries. They enjoy pace-setting leadership as well as serving as educators, conference speakers, and ministry trip facilitators. Learn more at PaulLDavis.com.



More than 2.9 billion people in the world have never heard the gospel, and even those who are “reached” desperately need to be discipled.

Time Is Short. Eternity Matters.

- ▶ Sometimes reaching unreached people groups (UPGs) means hacking through vegetation with machetes, smuggling Bibles across borders, or traversing mountain ranges in harsh conditions to make contact.

But oftentimes, reaching UPGs happens as missionaries develop creative ways to draw the unreached to themselves. And in Africa, that’s exactly what is happening with Muslim UPGs through ABWE’s medical ministries.

The Fulani people are one of the largest and most widespread ethnic groups in all of Africa, with nearly 38 million people living across 18 different countries. Historically a nomadic people, the Fulani who live near ABWE’s medical facilities are primarily pastoral, herding cattle and other livestock. They typically reside on the outskirts of towns where it’s easier to tend their animals.

“ABWE has been praying for the Fulani for years, even before our teams existed,” said Ron Washer, ABWE executive director for Africa.

ABWE missionaries first contacted the Fulani many years ago but could not speak their language.

Later, in 2015, God directed a Fulani Christian from a nearby country to join ABWE’s medical team as a chaplain. His work built bridges to the Fulani, and the ministry recruited Fulani nurses, guards, and interpreters to better reach Fulani patients. An entire Fulani Center was built where Fulani can learn about the Bible, discipleship, and literacy. The chaplain lives at the Center, hosting gospel conversations with any Fulani who visit.

Sean*, a missionary doctor, works at the Center and serves in a local house church and in Bible studies among the Fulani. By the time he arrived on the field in 2018, a few Fulani were already coming to Christ.



Then, in 2020, a group of Fulani believers were finally baptized—a historic moment.

“It’s the first Fulani baptisms among ABWE missionaries,” said Sean. “I don’t know if there’s ever been Fulani baptisms before in the region.”

One of Sean’s colleagues, a national, said, “If you were to have told me ten years ago that there would be a baptism among the Fulani, I would have said that you were crazy.”

“When a Muslim makes a profession of faith, that’s one thing,” said Washer. “But when a Muslim is baptized, they’re taking a great risk to break from their old life and pub-

“If you were to have told me ten years ago that there would be a baptism among the Fulani, I would have said that you were crazy.”

- AFRICAN CHRISTIAN -

licly identify with Christ. It means they’re serious.”

Since the Fulani are oral learners, Sean and the team fundraised for audio recorders with Bible narrations on them in the Fulani language. The campaign received more than \$12,000, and Sean says the funds will impact other ministry projects too.

The team continues to reach other UPGs and prays for more gospel workers to go to those who have not yet heard. ■

Learn more about how you can support our efforts to bring the gospel to unreached people groups at abwe.org/UPGs.

**Name changed for security.*

Five-year-old Alison had always attended church with just her mother and grandmother. Her father Andres, an unbeliever, was uninterested in church. He found it boring. After his daughter begged, Andres finally came to Iglesia Esperanza Viva (Living Hope Church), started by four ABWE missionaries in 2018. God moved in his heart that day. Transformed by the gospel, now Andres loves the local church and devotes any free time to engaging in Bible studies.



How We Serve

Our Philosophy of Ministry

For 94 years, our passion to proclaim the good news of Jesus Christ has guided us. Our 1,000 missionaries in 70 nations are fixated on evangelism.

We are also laser-focused on the church—planting new churches and helping existing churches multiply.

ABWE isn't just one ministry. We're a global family of ministries powered by nearly 400 sending churches committed to scripture. Churches send missionaries through ABWE to be trained and serve on teams using every skill to reach the lost.

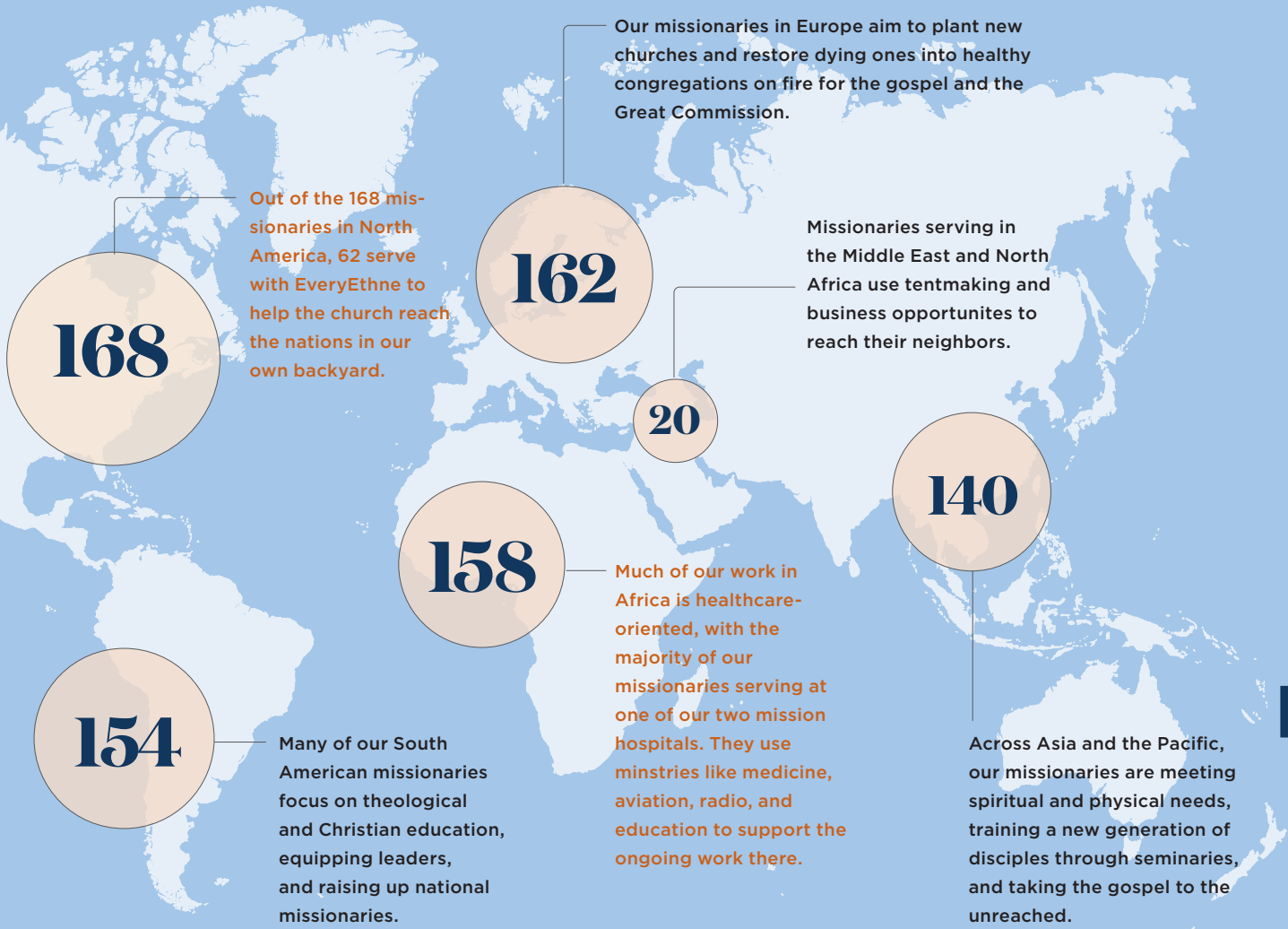
Our consuming desire is to equip and empower national leaders to make disciples

on their own—in a healthy, long-term way. Our job isn't done until new church plants are self-sufficient and missions-minded, reaching the nations around the world.

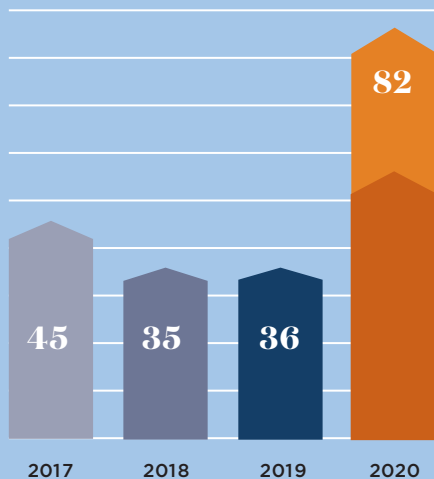
Everyone says they believe in relationships. For us, it's an obsession. We pour out our lives and possessions for the physical and spiritual needs we see in the world. We build partnerships of trust with devoted believers across the globe and churches in North America desperate to help. And we leverage those lessons learned to resource churches at home to reach the communities in their own backyard.

Learn More: abwe.org/about

Where We Serve



New Missionaries by Year



Despite COVID-19 changing the way we worked and traveled, we enabled 344 workers to serve on 81 short-term trips.

55 missionaries committed to serving four years or more on their appointed field, while **27** missionaries committed to serving 1 to 4 years.

Additionally, **18** short-termers served 2 months to 1 year, and 122 people visited ABWE to learn more about missions.



80

teammates serving with Live Global partner with national believers in places North Americans can't go. Find out more at abwe.org/liveglobal.



3,000+

people joined our week-long EveryEthne prayer campaign.

*Map reflects missionaries serving 6 months or more on each field



We thank each supporter who partnered with ABWE by giving toward this hospital.



8

A Time to Rejoice

- ▶ In February 2020, 2,000 people gathered together to celebrate the opening of the new Memorial Christian Hospital (MCH) in Bangladesh.

The dream for this new hospital, which now stands just 100 feet away from the original property, began in 1997. Twenty-three years later, the four-story facility boasts almost three times the square footage of the old one. It also includes one and a half the amount of bed space and five more operating rooms than the previous facility.

The majority of the patients who enter MCH can't afford basic medical care. You can help MCH continue offering its services for free or minimal cost to families in need. abwe.org/mchrelief

The brush with death opened Marleny's eyes to the reality that no matter how hard she tried to plan her steps, she wasn't in control of her life.



A Time to Repent

▶ According to the Joshua Project, 98% of Europeans don't know Christ. 77% of Spain's population claims to be Roman Catholic, but only 1.4% of about 46 million people in Spain are evangelical believers.

Marleny grew up in a Christian home and professed to be a believer. But she walked away from the faith of her family to marry Eiffel, an unbeliever.

A persistent friend kept inviting her to an ABWE church plant, but Marleny always found an excuse not to go. But one Sunday, on impulse, she caved in and went.

Marleny's heart was stirred throughout the service, but she didn't know who to talk to.

"The worship reminded me of my childhood, when I used to sing alongside my mother," Marleny said.

Although deeply moved, she left church without putting her faith in Christ.

Then came a dream. In the dream, people surrounded her on their knees in the church and disappeared as each of their names were called. One by one, each person vanished—except Marleny. Her name was never called. She woke up in tears.

Later, when a car veered onto the sidewalk and almost hit her, Marleny came face-to-face with the brevity of life. She reached out to ABWE missionaries Rich and Cindy Brown, whom she had met at church. She trembled with fear in her

meeting with them, repenting of her sins and praying to embrace Christ as her Lord and Savior.

"My life has never been the same. God forgave me and helped me forgive others," Marleny said.

In 2020, Marleny publicly professed her faith through baptism. Eiffel and all three of their children attended the service. She continues to ask God to reveal himself to her husband and oldest son.

"I pray that Jesus will knock on the door of their hearts. Faith moves mountains and nothing is impossible for God." ■



A Time to Give Thanks

"I don't think I can explain how blessed we have felt lately. In the middle of a pandemic with difficulties on and off the field, we see God moving in people's lives, disciples being made, and the lost being reached. We can't believe how wonderful of a life we have."

- DAVID CARREL, MISSIONARY IN BRAZIL -



30

TRANSLATION
PROJECTS



394

CHURCHES PLANTED
OR STRENGTHENED



1,102

BAPTISMS
CELEBRATED



97,178

PATIENTS RECEIVED
HEALTHCARE

In 2020, our missionaries had time to:

INVEST IN THEIR NEIGHBORS

"We distributed 630 packages of food to families in 21 different communities. More importantly, each of those 630 people heard the gospel and there were many professions of faith in Christ."

- Nicaragua Field Team -

INVEST IN THEIR CHURCH

"I was able to start mentoring and leading a Bible study with two young girls from our church plant. A fellow missionary and I were also able to go on walks with them to encourage them in their faith."

- Erin Wawro, Brazil -

INVEST IN THEIR FAITH

"While my office was still used for meetings and projects, I've had more time during quarantine to delve deeper in Bible studies, even creating study materials for the locals."

- Hannah Strayer, Togo -

Financial Report

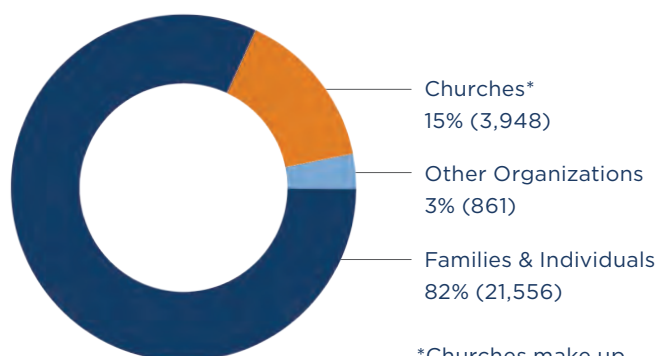
	2018	2019	2020
--	------	------	------

FUNDING SOURCES			
Contributions	\$42,034,542	\$44,113,123	\$45,715,776
Investment Income	(\$-534,679)	\$5,283,777	\$5,860,507
Other Sources	\$850,707	\$1,192,687	\$2,962,615
TOTAL FUNDING SOURCES	\$42,858,064	\$50,589,587	\$54,538,898

EXPENSES			
Program	\$41,166,558	\$43,175,884	\$40,637,774
Management and General	\$5,677,070	\$5,810,487	\$5,773,490
Fundraising	\$3,014,436	\$3,225,225	\$3,442,692
TOTAL EXPENSES	\$49,858,064	\$52,211,596	\$49,853,956

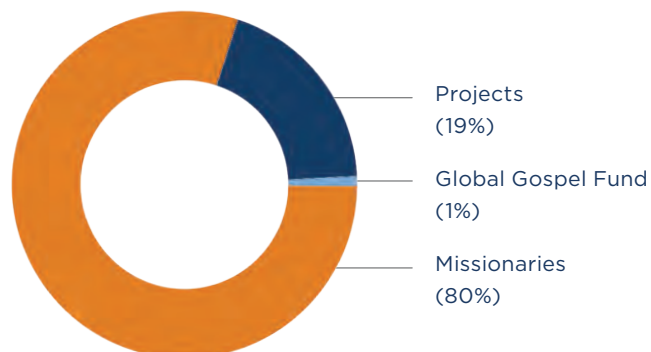
Complete and audited financial statements are available at abwe.org/abwe-annual-financial-statements.

WHO SUPPORTED ABWE?



*Churches make up 15% of our donor base, but they give more than 40% of all gifts.

WHAT DID THEY SUPPORT?



HOW WAS THE MONEY USED?

- Programs (82%)**
 - Evangelism/Church Multiplication (64%)
 - Compassion (8%)
 - Bible Training (7%)
 - Children's Education (3%)
- Management/General (11%)**
- Fundraising (7%)**



PO Box 8585
Harrisburg, PA 17105-8585

Change Service Requested



abweministries



@abwe_intl



abwe_intl



/abwe



/c/ABWEInternational



info@abwe.org

A GLOBAL FAMILY OF MINISTRIES

