

# A SHORT-TERMER'S GUIDE TO THE FIELD

Short-Term missions are trips that last from 2 months to 2 years.

## EXPLORE YOUR CALL



- Talk with your pastor & church.
- Seek input from family, friends & spiritual mentors.
- Pray & work to discover your long-term interests and calling.

## PRELIMINARY APPLICATION PROCESS



- Complete ABWE preliminary missionary application.
- Send recommendations from pastor and home church.

## FULL APPLICATION PROCESS



Complete full application. Supply a home church certification, references and a medical history.

After a telephone call with ABWE administrator, you'll receive a formal invitation to the field.

Receive financial clearance and a background check.

## INVITATION TO COMPLETE FULL APPLICATION

## ATTEND SHORT-TERM FIELD PREP





Training to help prepare you for the variety of experiences, opportunities and challenges you will face on the field.

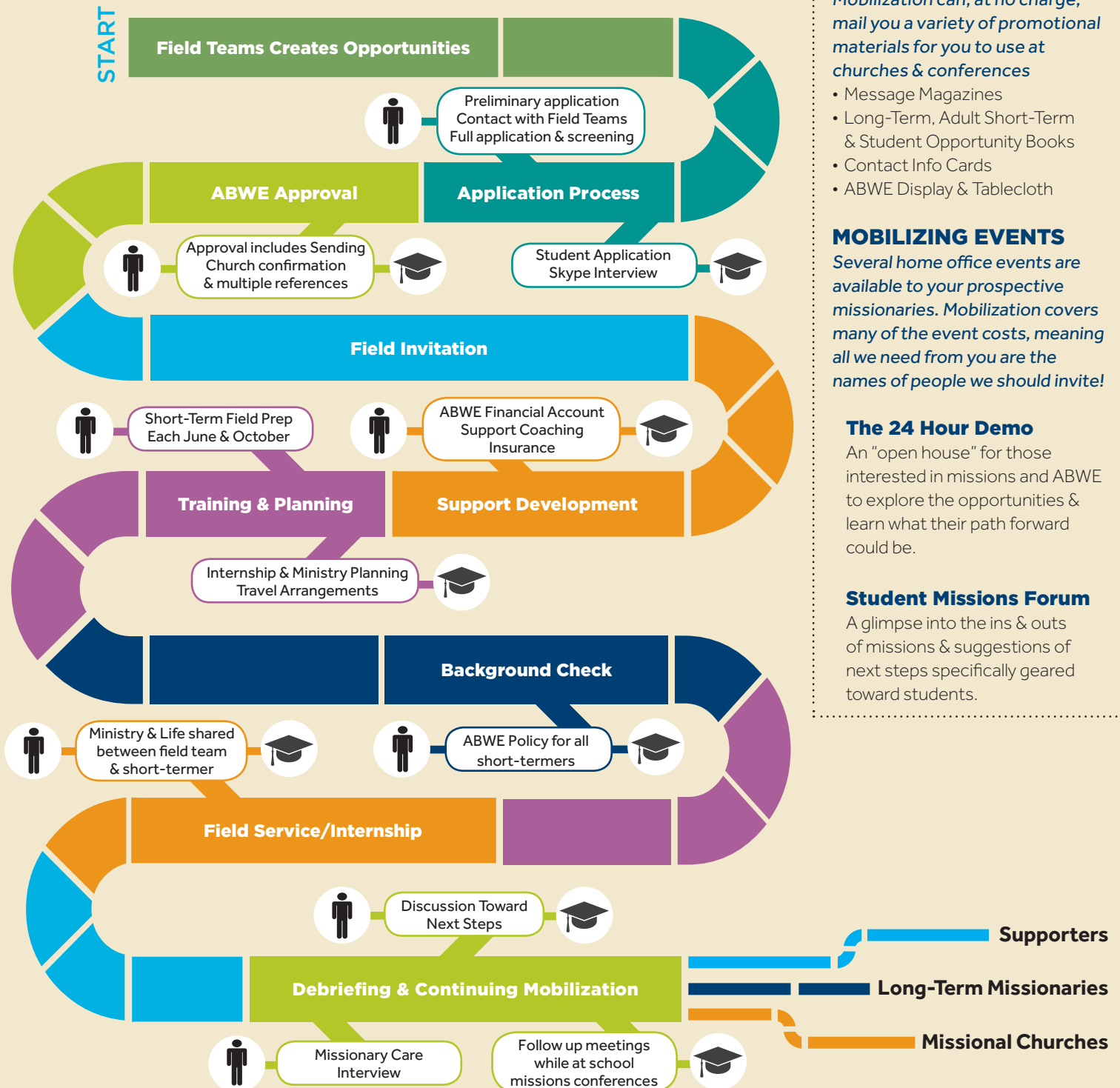
## DEPART FOR THE FIELD



# MOBILIZING OUR FUTURE MISSIONARIES

## The Short-Term Process

 Adult Short-term  Students



## Resources

### PROMOS & MATERIALS

Mobilization can, at no charge, mail you a variety of promotional materials for you to use at churches & conferences

- Message Magazines
- Long-Term, Adult Short-Term & Student Opportunity Books
- Contact Info Cards
- ABWE Display & Tablecloth

### MOBILIZING EVENTS

Several home office events are available to your prospective missionaries. Mobilization covers many of the event costs, meaning all we need from you are the names of people we should invite!

### The 24 Hour Demo

An "open house" for those interested in missions and ABWE to explore the opportunities & learn what their path forward could be.

### Student Missions Forum

A glimpse into the ins & outs of missions & suggestions of next steps specifically geared toward students.